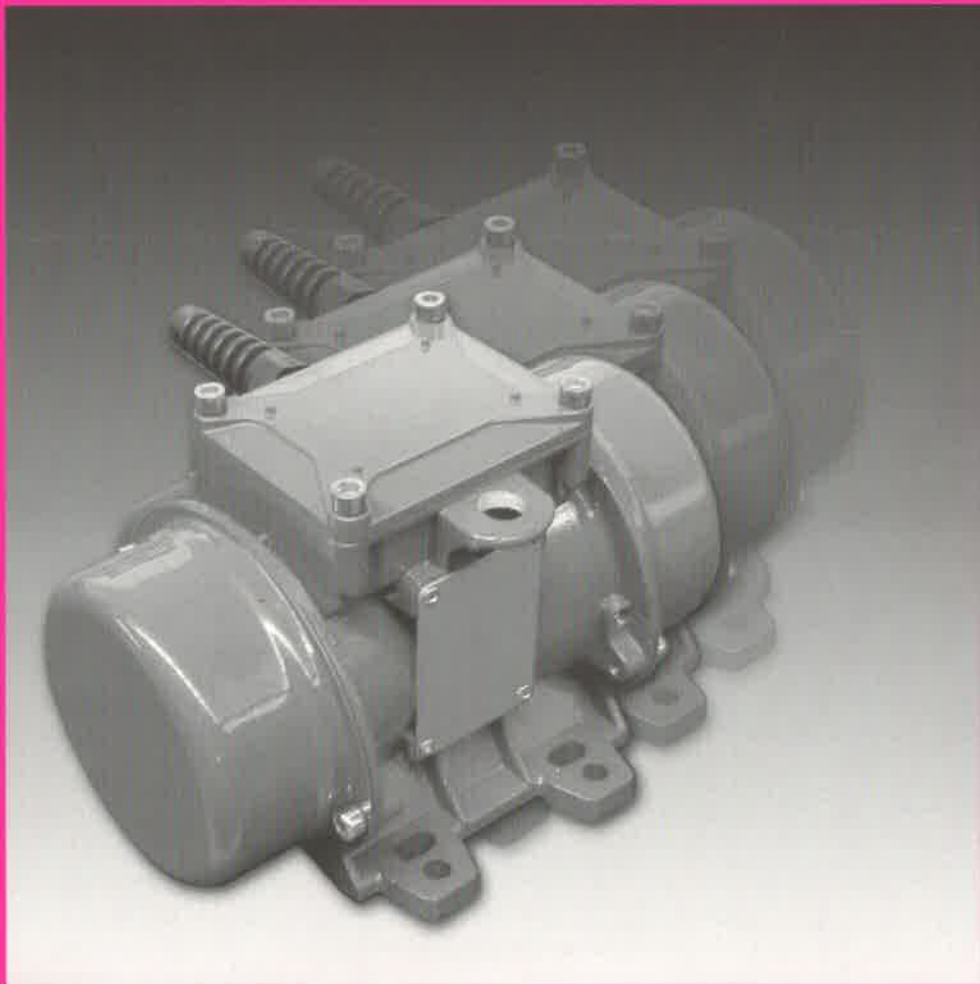




SOCIETA' TECNO



ZSALUVIBRÁTOROK

motovibratori

motovibrateurs

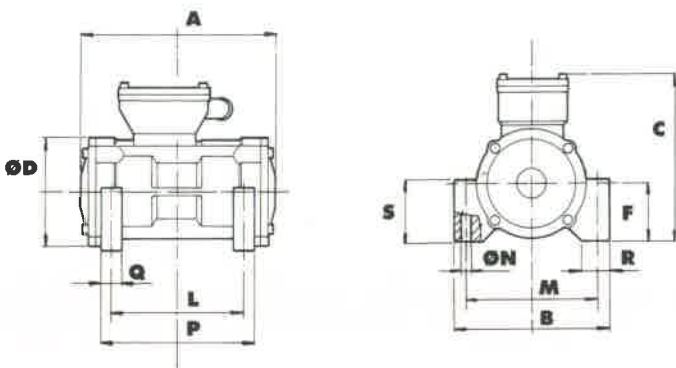
vibrator motors

Motovibratori elettrici trifase servizio continuo ad intensità vibrante fissa



**Motovibrateurs electriques
triphase service continu à
intensité vibrante fixe**

**Three-phase vibrator motors
continuous duty at fixed
intensity vibrating**



TFN 3000 = trifase Volt 230/400 - 3000 giri al
minuto - servizio continuo

triphase Volt 230/400 - 3000 tours/1' - service
continu

three-phase Volt 230/400 - 3000 r.p.m. -
continuous duty

TFN 3000

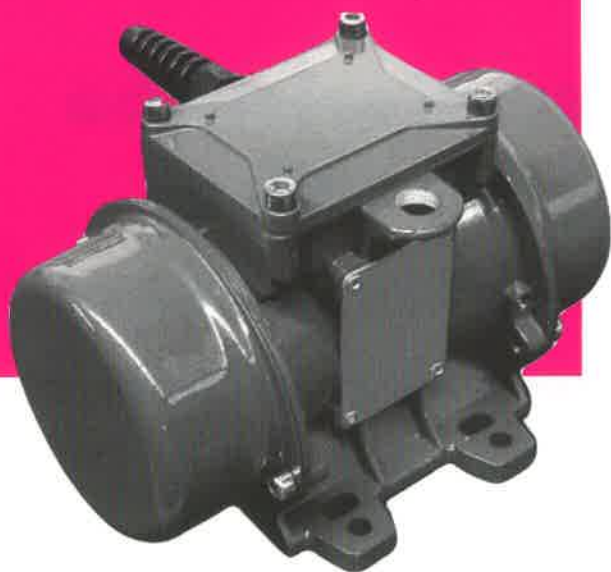
3000 VIBR/MIN - 3000 VIBR/MN - 3000 VIB/MIN

Tipo Type Type	Hz Hz Hz	Giri/1° rpm tours/1°	Forza centrifuga Force centrif. Centrif. force Kg	Peso Poids Weight Kg	Potenza nominale Puisance nom. Input power W	Corrente nominale Nom. current Courant nom. A (400 V)
TFN.3001	50	3.000	79	5,30	125	0,25
TFN.3003	50	3.000	101	5,60	140	0,28
TFN.3005	50	3.000	147	7,10	180	0,37
TFN.3007	50	3.000	212	7,50	190	0,39
TFN.3009	50	3.000	287	12,50	380	0,73
TFN.3011	50	3.000	430	13,10	420	0,81

DIMENSIONI

Tipo Type - Type	Dimensioni d'ingombro (mm) Cotes dimensions (mm) - Overall dimensions (mm)					Dimensioni di fissaggio (mm) Dimensions fixations (mm) - Fixing dimensions (mm)						
	A	B	C	D (Ø)	F	L	M	N (Ø)	P	Q	R	S
TFN.3001	180	145	153	103	56	122	122	11	146	22	27	60
TFN.3003	180	145	153	103	56	122	122	11	146	22	27	60
TFN.3005	206	164	170	115	61	140	140	11	163	23	30	66
TFN.3007	206	164	170	115	61	140	140	11	163	23	30	66
TFN.3009	230	193	187	138	73	164	164	13	192	28	38	77
TFN.3011	230	193	187	138	73	164	164	13	192	28	38	77

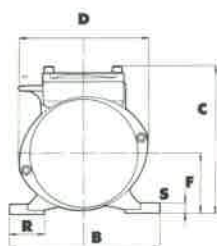
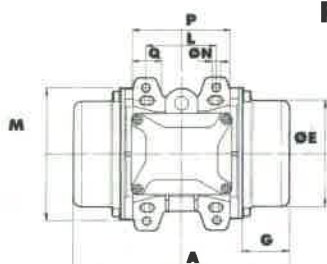
Motovibratori elettrici trifase o monofase servizio continuo ad intensità vibrante regolabile



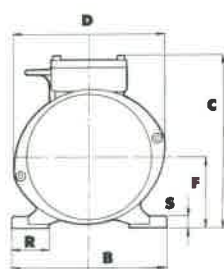
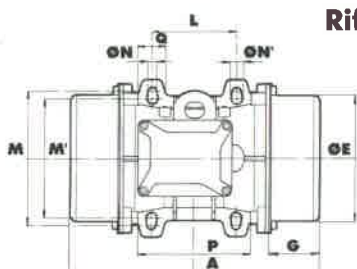
*Motovibrateurs electriques
triphase ou uniphase service
continu à intensité vibrante
reglable*

*Three-phase or single-phase
vibrator motors continuous
duty at adjustable intensity
vibrating*

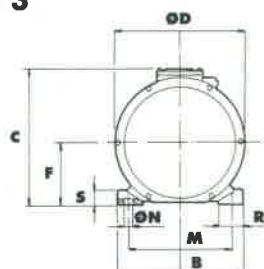
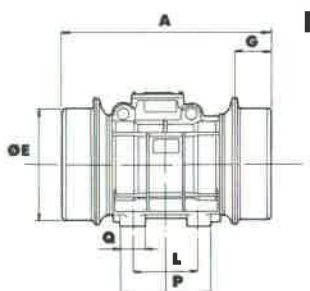
Rif. 1



Rif. 2



Rif. 3



TRNM 3000 = monofase Volt 230 - 3000 giri al minuto - regolabile

*uniphase Volt 230 - 3000 tours/1' - reglable
single-phase Volt 230 - 3000 r.p.m. - adjustable
intensity vibrating*

TRN 1500 = trifase Volt 230/400 - 1500 giri al minuto - regolabile - servizio continuo

*triphase Volt 230/400 - 1500 tours/1' - reglable - service continu
three-phase Volt 230/400 - 1500 r.p.m. - adjustable
intensity vibrating - continuous duty*

TRN 3000 = trifase Volt 230/400 - 3000 giri al minuto - regolabile - servizio continuo

*triphase Volt 230/400 - 3000 tours/1' - reglable - service continu
three-phase Volt 230/400 - 3000 r.p.m. - adjustable
intensity vibrating - continuous duty*

TRNM 3000

3000 VIBR/MIN - 3000 VIBR/MN - 3000 VIB/MIN

Condensatori

Tipo Type Type	Hz Hz Hz	Giri/1° rpm tours/1°	Forza centrifuga Force centrif. Centrif. force Kg	Peso Poids Weight Kg	Potenza nominale Puisance nom. Input power W	Corrente nominale Nom. current Courant nom. A (230 V)	Volt Volt Volt	Hz Hz Hz	µF µF µF
TRN.3000/M	50	3.000	66	4,55	150	0,68	230	50	10
TRN.3002/M	50	3.000	125	4,75	160	0,73	230	50	10
TRN.3004/M	50	3.000	187	5,10	160	0,73	230	50	10
TRN.3006/M	50	3.000	310	8,50	250	1,15	230	50	16
TRN.3008/M	50	3.000	668	21	440	2,10	230	50	16

DIMENSIONI

Tipo Type - Type	Rif.	Dimensioni d'ingombro (mm) Cotes dimensions (mm) - Overall dimensions (mm)							Dimensioni di fissaggio (mm) Dimensions fixations (mm) - Fixing dimensions (mm)						
		A	B	C	D	E (∅)	F	G	L	M	N (∅)	P	Q	R	S
TRN.3000/M	1	212	150	145	130	105	60	46	62/74	106	9	99	30	35	10
TRN.3002/M	1	212	150	145	130	105	60	46	-	-	9	99	30	35	10
TRN.3004/M	1	212	150	145	130	105	60	46	70	130	9	99	30	35	10
TRN.3006/M	2	260	166	185	160	130	75	50	90/90	125/140	13/11	120	30	40	12
TRN.3008/M	3	288	190	205	187	151	85	54	100	160	13	136	33	40	16

TRN 1500

1500 VIBR/MIN - 1500 VIBR/MN - 1500 VIB/MIN

Tipo Type Type	Hz Hz Hz	Giri/1° rpm tours/1°	Forza centrifuga Force centrif. Centrif. force Kg	Peso Poids Weight Kg	Potenza nominale Puisance nom. Input power W	Corrente nominale Nom. current Courant nom. A (400 V)
TRN.3100	50	1.500	31	4,75	80	0,20
TRN.3102	50	1.500	55	5,25	95	0,21
TRN.3104	50	1.500	78	5,60	95	0,21
TRN.3106	50	1.500	207	10,80	180	0,45
TRN.3108	50	1.500	404	24,50	310	0,66
TRN.3110	50	1.500	500	25,90	340	0,71

DIMENSIONI

Tipo Type - Type	Rif.	Dimensioni d'ingombro (mm) Cotes dimensions (mm) - Overall dimensions (mm)							Dimensioni di fissaggio (mm) Dimensions fixations (mm) - Fixing dimensions (mm)						
		A	B	C	D	E (∅)	F	G	L	M	N (∅)	P	Q	R	S
TRN.3100	1	212	150	145	130	105	60	46	62/74	106	9	99	30	35	10
TRN.3102	1	212	150	145	130	105	60	46	-	-	9	99	30	35	10
TRN.3104	1	230	150	145	130	105	60	55	70	130	9	99	30	35	10
TRN.3106	2	298	166	185	160	130	75	69	90/90	125/140	13/11	120	30	40	12
TRN.3108	3	350	190	205	187	151	85	85	100	160	13	136	33	40	16
TRN.3110	3	350	190	205	187	151	85	85	100	160	13	136	33	40	16

TRN 3000

3000 VIBR/MIN - 3000 VIBR/MN - 3000 VIB/MIN

Tipo Type Type	Hz Hz Hz	Giri/1° rpm tours/1°	Forza centrifuga Force centrif. Centrif. force Kg	Peso Poids Weight Kg	Potenza nominale Puisance nom. Input power W	Corrente nominale Nom. current Courant nom. A (400 V)
TRN.3000	50	3.000	66	4,55	150	0,30
TRN.3002	50	3.000	125	4,75	180	0,35
TRN.3004	50	3.000	187	5,10	180	0,35
TRN.3006	50	3.000	310	8,50	270	0,58
TRN.3008	50	3.000	668	21	500	0,98
TRN.3010	50	3.000	859	32	600	1,00
TRN.3012	50	3.000	1.050	34	720	1,20
TRN.3014	50	3.000	1.610	45	1.500	2,40
TRN.3016	50	3.000	2.000	47	2.000	3,30

DIMENSIONI

Tipo Type - Type	Rif.	Dimensioni d'ingombro (mm) Cotes dimensions (mm) - Overall dimensions (mm)							Dimensioni di fissaggio (mm) Dimensions fixations (mm) - Fixing dimensions (mm)						
		A	B	C	D	E (∅)	F	G	L	M	N (∅)	P	Q	R	S
TRN.3000	1	212	150	145	130	105	60	46	62/74	106	9	99	30	35	10
TRN.3002	1	212	150	145	130	105	60	46	75	105	9	99	30	35	10
TRN.3004	1	212	150	145	130	105	60	46	70	130	9	99	30	35	10
TRN.3006	2	260	166	185	160	130	75	50	90/90	125/140	13/11	120	30	40	12
TRN.3008	3	288	190	205	187	151	85	54	100	160	13	136	33	40	16
TRN.3010	3	355	210	236	216	181	101	71	120	170	17	160	40	43	20
TRN.3012	3	355	210	236	216	181	101	71	120	170	17	160	40	43	20
TRN.3014	3	446	245	260	258	219	122	86	140	190	17	190	40	45	25
TRN.3016	3	446	245	260	258	219	122	86	140	190	17	190	40	45	25